

Gannet 25

GROUND FLOOR

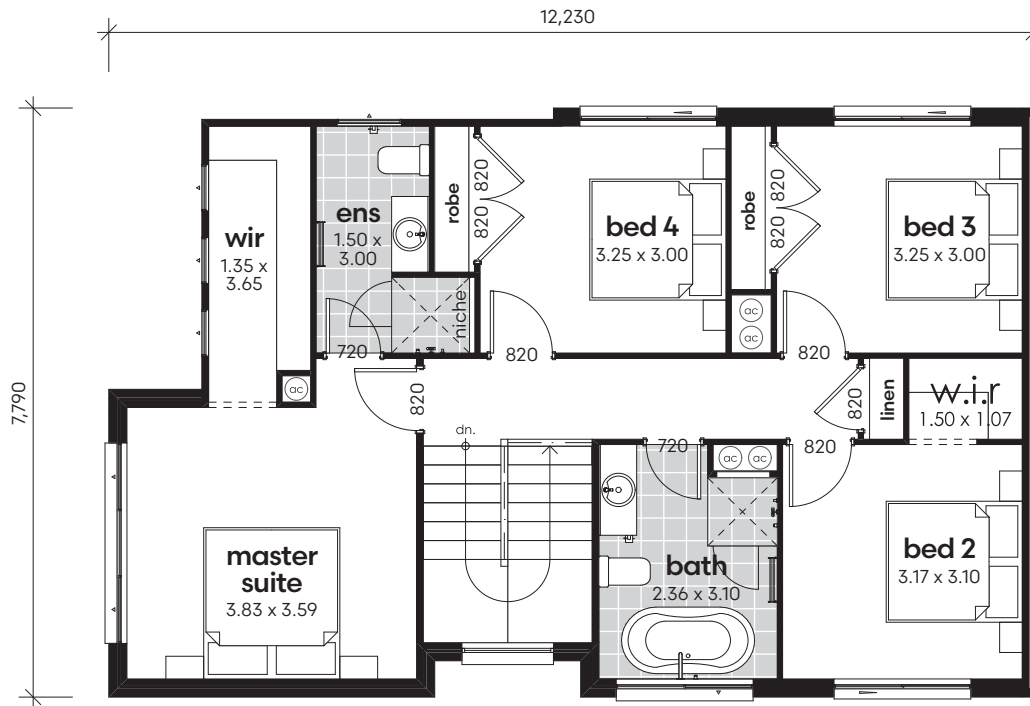


 4
  2.5
  1

AREA CALCULATIONS

living ground floor	111.57m ²
living first floor	88.62m ²
garage	22.93m ²
porch	3.28m ²
alfresco	12.11m ²
net living area	200.19m²
gross floor area	238.51m²
gross floor area	25.7sq

*Copyright of plans and documentation remain the exclusive property of Logico Homes Pty Ltd Builders Licence No 249513C



Gannet 25 FIRST FLOOR



*Copyright of plans and documentation remain the exclusive property of Logico Homes Pty Ltd Builders Licence No 249513C

 4
  2.5
  1

AREA CALCULATIONS

living ground floor	111.57m ²
living first floor	88.62m ²
garage	22.93m ²
porch	3.28m ²
alfresco	12.11m ²
net living area	200.19m²
gross floor area	238.51m²
gross floor area	25.7sq