

# Gannet 28 GROUND FLOOR

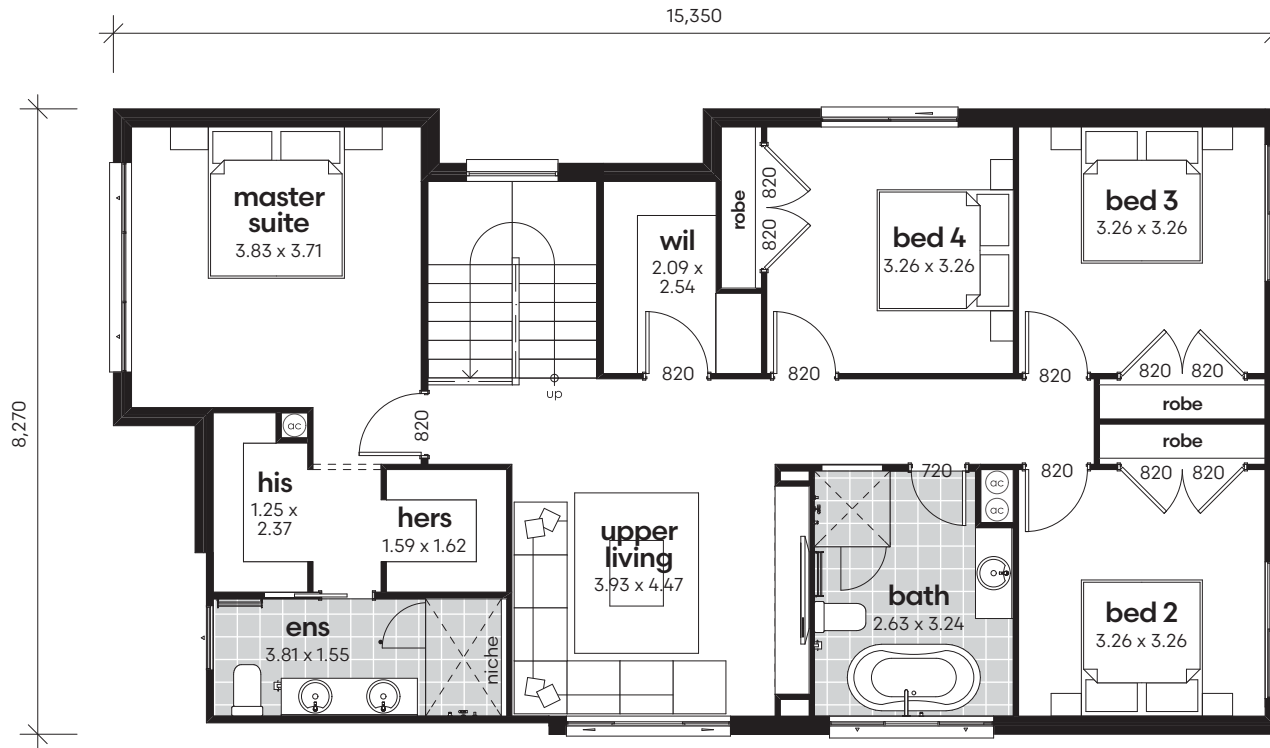


4   
 2.5   
 1

## AREA CALCULATIONS

living ground floor	107.80m <sup>2</sup>
living first floor	118.54m <sup>2</sup>
garage	22.76m <sup>2</sup>
porch	2.22m <sup>2</sup>
alfresco	13.04m <sup>2</sup>
<b>net living area</b>	<b>226.34m<sup>2</sup></b>
<b>gross floor area</b>	<b>264.36m<sup>2</sup></b>
<b>gross floor area</b>	<b>28.5sq</b>

\*Copyright of plans and documentation remain the exclusive property of Logico Homes Pty Ltd Builders Licence No 249513C



# Gannet 28 FIRST FLOOR



\*Copyright of plans and documentation remain the exclusive property of Logico Homes Pty Ltd Builders Licence No 249513C

 4
  2.5
  1

## AREA CALCULATIONS

living ground floor	107.80m <sup>2</sup>
living first floor	118.54m <sup>2</sup>
garage	22.76m <sup>2</sup>
porch	2.22m <sup>2</sup>
alfresco	13.04m <sup>2</sup>
<b>net living area</b>	<b>226.34m<sup>2</sup></b>
<b>gross floor area</b>	<b>264.36m<sup>2</sup></b>
<b>gross floor area</b>	<b>28.5sq</b>