

 4
  2.5
  2

### AREA CALCULATIONS

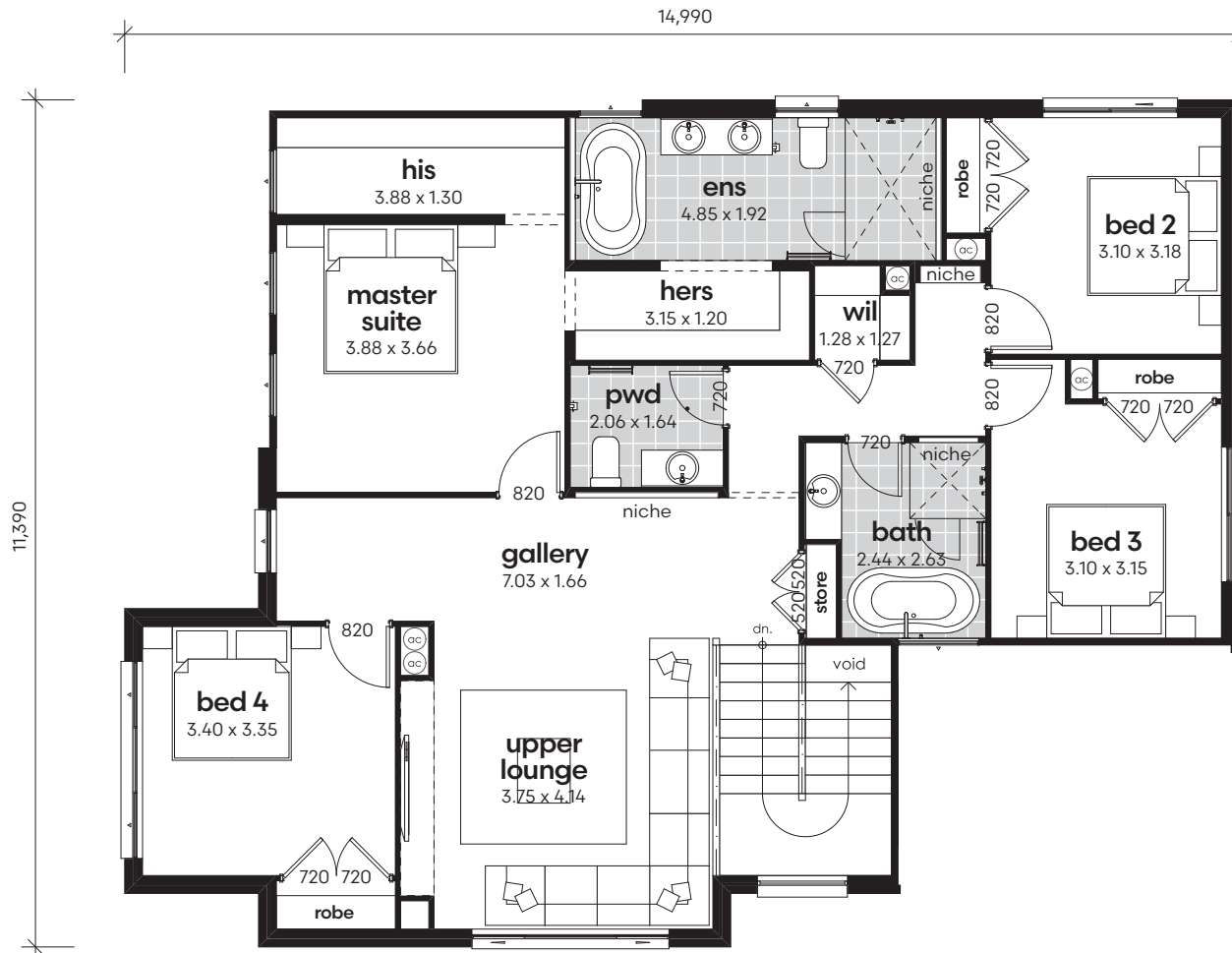
living ground floor	127.51m <sup>2</sup>
living first floor	135.43m <sup>2</sup>
garage	33.44m <sup>2</sup>
porch	6.39m <sup>2</sup>
alfresco	14.48m <sup>2</sup>
<b>net living area</b>	<b>262.91m<sup>2</sup></b>
<b>gross floor area</b>	<b>317.25m<sup>2</sup></b>
<b>gross floor area</b>	<b>34.1sq</b>



# Heron 34 GROUND FLOOR



\*Copyright of plans and documentation remain the exclusive property of Logico Homes Pty Ltd Builders Licence No 249513C



# Heron 34 FIRST FLOOR



\*Copyright of plans and documentation remain the exclusive property of Logico Homes Pty Ltd Builders Licence No 249513C

 4
  2.5
  2

## AREA CALCULATIONS

living ground floor	127.51m <sup>2</sup>
living first floor	135.43m <sup>2</sup>
garage	33.44m <sup>2</sup>
porch	6.39m <sup>2</sup>
alfresco	14.48m <sup>2</sup>
<b>net living area</b>	<b>262.91m<sup>2</sup></b>
<b>gross floor area</b>	<b>317.25m<sup>2</sup></b>
<b>gross floor area</b>	<b>34.1sq</b>