

Sandpiper 24

GROUND FLOOR

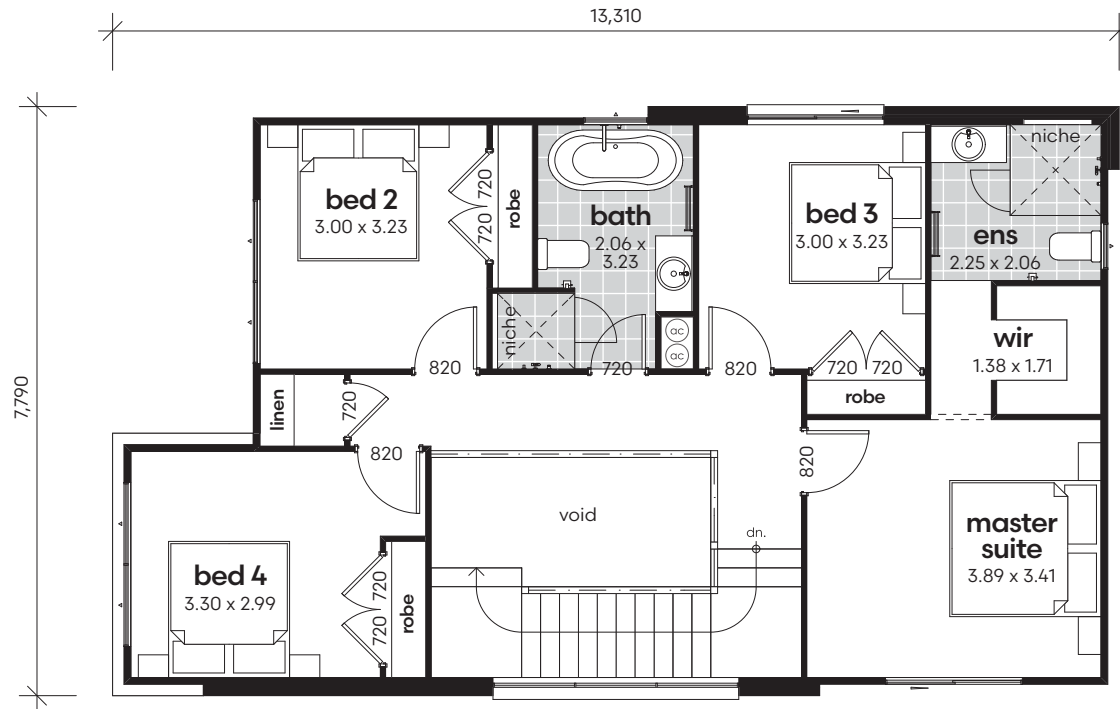


*Copyright of plans and documentation remain the exclusive property of Logico Homes Pty Ltd Builders Licence No 249513C

 4
  2.5
  2

AREA CALCULATIONS

living ground floor	89.80m ²
living first floor	92.32m ²
garage	34.19m ²
porch	4.89m ²
alfresco	6.50m ²
net living area	182.12m²
gross floor area	227.70m²
gross floor area	24.5sq



 4
  2.5
  2

AREA CALCULATIONS

living ground floor	89.80m ²
living first floor	92.32m ²
garage	34.19m ²
porch	4.89m ²
alfresco	6.50m ²
net living area	182.12m²
gross floor area	227.70m²
gross floor area	24.5sq



Sandpiper 24

FIRST FLOOR



*Copyright of plans and documentation remain the exclusive property of Logico Homes Pty Ltd Builders Licence No 249513C