

# Pipit 22 GROUND FLOOR

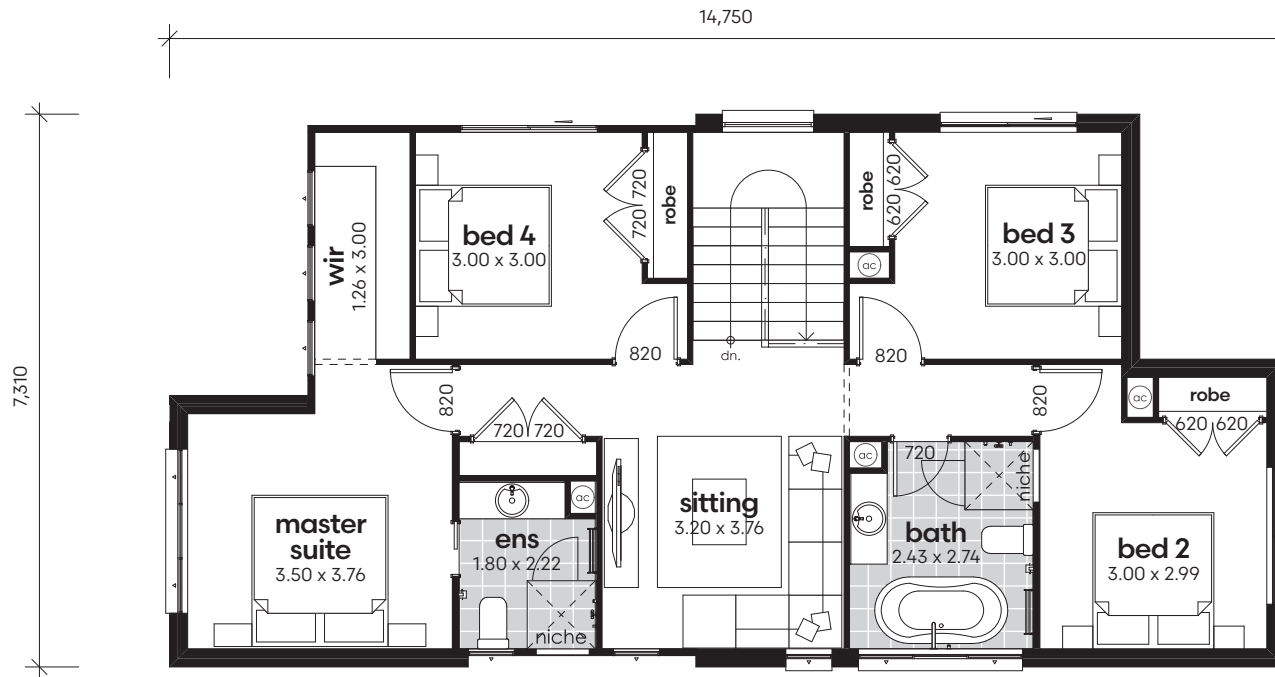


 4
  2.5
  1

## AREA CALCULATIONS

living ground floor	80.31m <sup>2</sup>
living first floor	92.73m <sup>2</sup>
garage	19.69m <sup>2</sup>
porch	4.07m <sup>2</sup>
alfresco	9.67m <sup>2</sup>
<b>net living area</b>	<b>173.04m<sup>2</sup></b>
<b>total floor area</b>	<b>206.47m<sup>2</sup></b>
<b>total floor area</b>	<b>22.2sq</b>

\*Copyright of plans and documentation remain the exclusive property of Logico Homes Pty Ltd Builders Licence No 249513C



 4
  2.5
  1

### AREA CALCULATIONS

living ground floor	80.31m <sup>2</sup>
living first floor	92.73m <sup>2</sup>
garage	19.69m <sup>2</sup>
porch	4.07m <sup>2</sup>
alfresco	9.67m <sup>2</sup>
<b>net living area</b>	<b>173.04m<sup>2</sup></b>
<b>total floor area</b>	<b>206.47m<sup>2</sup></b>
<b>total floor area</b>	<b>22.2sq</b>

  
**Logico homes**  
*Live to smile*

**Pipit 22** FIRST FLOOR



\*Copyright of plans and documentation remain the exclusive property of Logico Homes Pty Ltd Builders Licence No 249513C