

# Sandpiper 24 GROUND FLOOR

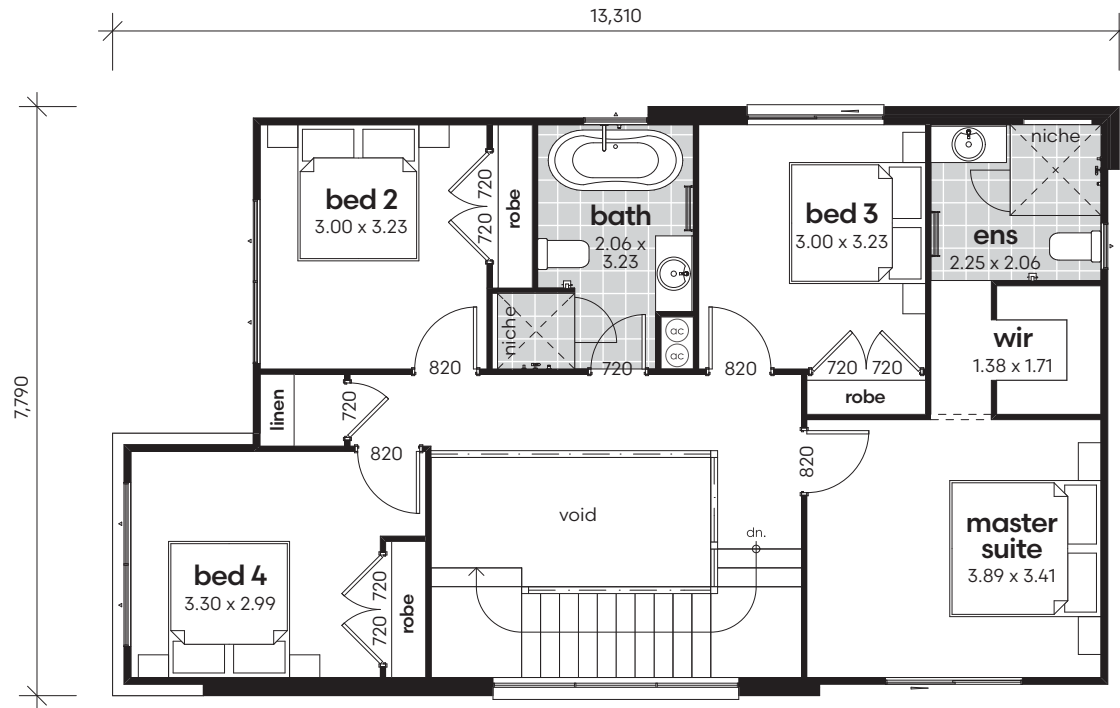


\*Copyright of plans and documentation remain the exclusive property of Logico Homes Pty Ltd Builders Licence No 249513C

 4
  2.5
  2

## AREA CALCULATIONS

living ground floor	89.80m <sup>2</sup>
living first floor	92.32m <sup>2</sup>
garage	34.19m <sup>2</sup>
porch	4.89m <sup>2</sup>
alfresco	6.50m <sup>2</sup>
<b>net living area</b>	<b>182.12m<sup>2</sup></b>
<b>total floor area</b>	<b>227.70m<sup>2</sup></b>
<b>total floor area</b>	<b>24.5sq</b>



# Sandpiper 24 FIRST FLOOR



\*Copyright of plans and documentation remain the exclusive property of Logico Homes Pty Ltd Builders Licence No 249513C

 4
  2.5
  2

## AREA CALCULATIONS

living ground floor	89.80m <sup>2</sup>
living first floor	92.32m <sup>2</sup>
garage	34.19m <sup>2</sup>
porch	4.89m <sup>2</sup>
alfresco	6.50m <sup>2</sup>
<b>net living area</b>	<b>182.12m<sup>2</sup></b>
<b>total floor area</b>	<b>227.70m<sup>2</sup></b>
<b>total floor area</b>	<b>24.5sq</b>